



Polygonaceae - *Rumex acetosella*
(sheep sorrel) non-native



Polygonaceae - *Rumex crispus*
(curly dock) non-native



Habitat - grassland/wildflowers
bluff top coastal trail



Habitat - grassland/wildflowers
bluff top coastal trail



Polygonaceae - *Rumex crispus*
(curly dock) non-native



Polygonaceae - *Rumex salicifolius*
(willow dock)



Habitat - grassland/cypress trees



Habitat grassland/wetland
bluff top



Portulacaceae - *Calandrinia ciliata*
(Red Maids)



Ranunculaceae - *Ranunculus californicus*
(California buttercup)



Habitat grassland/wetland
bluff top



Habitat grassland/wetland
bluff top



Rosaceae - *Fragaria chiloensis*
(beach strawberry)



Salicaceae - *Salix lasiolepis*
(arroyo willow)



Habitat grassland/wetland
bluff top



Habitat - wetland

H
M
B

B
L
U
F
F

T
O
P
S

P
H
O
T
O
S

B
Y

T
O
N
I
C
O
R
E
L
L
I

2
0
0
8



Habitat - coastal scrub (coyote brush) bluff top



Habitat - along Railroad Avenue Railroad right-of way



Onagraceae - *Epilobium brachycarpum* (panicked willow herb)



Onagraceae - *Oenothera elata* ssp. *hookeri* (Hooker's evening primrose)



Aizoaceae - *Carpobrotus edulis* (ice plant) non-native



Apiaceae - *Eryngium armatum* (coastal eryngo)



Pinaceae - *Pinus radiata* (Monterey pine) non-indigenous



Plantaginaceae - *Plantago coronopus* (cut-leaved plantain) non-native



Asteraceae - *Aster chilense* (common California aster)



Asteraceae - *Baccharis pilularis* (coyote brush)



Plumbaginaceae - *Armeria maritima* ssp. *californica* (sea-pink)



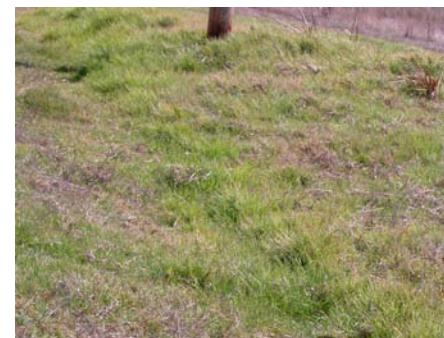
Plumbaginaceae - *Armeria maritima* ssp. *californica* (sea-pink)



Asteraceae - *Cirsium vulgare* (bull thistle) non-native



Asteraceae - *Conyza canadensis* (horseweed)



Poaceae - *Cynodon dactylon* (Bermuda grass) non-native



Poaceae - *Hordeum brachyantherum* (California barley)



Liliaceae - *Amaryllis belladonna*
(naked lady) non-native



Liliaceae - *Chlorogalum pomeridianum*
(soap plant/amole)



Asteraceae - *Cotula coronopifolia*
(brass-buttons) non-native



Asteraceae - *Cotula coronopifolia*
(brass-buttons) non-native



Linaceae - *Linum bienne*
(narrow-leaved flax)



Linaceae - *Linum bienne*
(narrow-leaved flax)



Asteraceae - *Lasthenia californica* ssp.
macrantha (perennial goldfields)



Asteraceae - *Madia sativa*
(coast tarweed)



Malvaceae - *Sidalcea malviflora*
(checker mallow)



Malvaceae - *Sidalcea malviflora*
(checker mallow)



Asteraceae - *Picris echioides*
(bristly ox-tongue) non-native



Asteraceae - *Picris echioides*
(bristly ox-tongue) non-native



Onagraceae - *Camissonia ovata*
(sun cup)



Onagraceae - *Epilobium brachycarpum*
(panicked willow herb)



Asteraceae - *Senecio mikanioides*
(Cape-ivy) non-native



Boraginaceae - *Plagiobothrys chorisianus*
(Choris' popcorn-flower) rare plant



Boraginaceae - *Plagiobothrys chorisianus*
(Choris' popcorn-flower) rare plant



Brassicaceae - *Raphanus sativus*
(wild radish) non-native



Caryophyllaceae - *Spargularia macrotheca* var. *macrotheca*



Convolvulaceae - *Convolvulus arvensis*
(bindweed) non-native



Cupressaceae - *Cupressus macrocarpa*
(Monterey cypress) non-indigenous



Cyperaceae - *Cyperus eragrostis*
(tall cyperus)



Dipsacaceae - *Dipsacus* species
(teasel) non-native



Fabaceae - *Lotus corniculatus*
(birdfoot trefoil) non-native



Fabaceae - *Lotus corniculatus*
(birdfoot trefoil) non-native



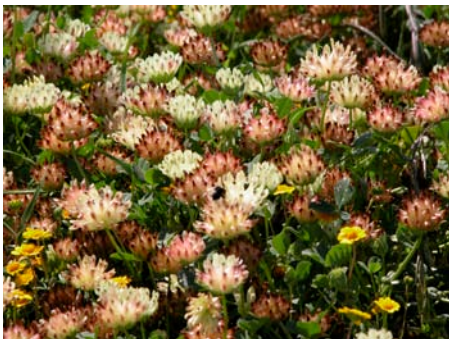
Fabaceae - *Lupinus variicolor*
(Lindley's varied lupine)



Fabaceae - *Lupinus variicolor*
(Lindley's varied lupine)



Fabaceae - *Trifolium fucatum*
(sour/bull clover)



Fabaceae - *Trifolium fucatum*
(sour/bull clover)



Iridaceae - *Sisyrinchium bellum*
(blue-eyed-grass)



Iridaceae - *Sisyrinchium bellum*
(blue-eyed-grass)



Lamiaceae - *Mentha pulegium*
(pennyroyal) non-native